

## HYPERTENSION

A complete range  
for the right expertise

- Active Renin
- Angiotensin
- Aldosterone



# Renin Angiotensin

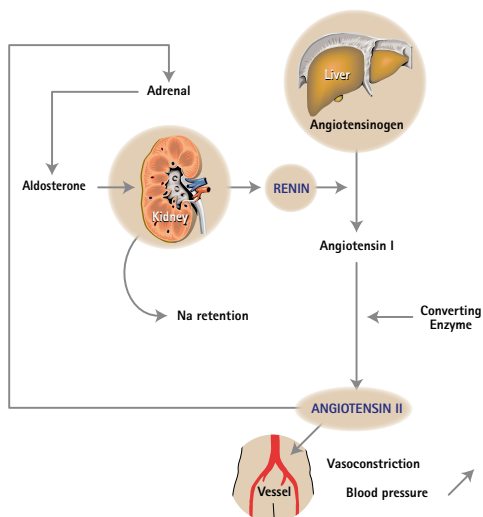


# Renin Angiotensin

## Clinical interest

- Assessment and follow-up of hypertensive patients:
    - Differential diagnosis between primary and secondary hyperaldosteronism: for primary Renin is low, whereas for secondary Renin is high
    - Diagnosis of unilateral stenosis of renal artery
    - Assessment of insufficient response to antihypertensive treatment
    - Detection of an ectopic production of Renin in cases of cancer associated with hypertension
  - Assessment and follow-up of adrenal insufficiency therapy: detection of hypoaldosteronism
- Two methods are available for measuring Renin
- **Active Renin:** the use of specific monoclonal antibodies allows quantitative determination of active Renin molecules in human plasma
  - **Plasma Renin activity (PRA):** the Angiotensin I level directly represents the plasma Renin activity

## Renin-Angiotensin system



# Renin (RENINE)

## Performances

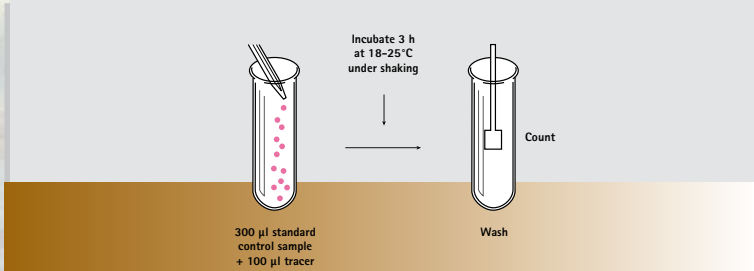
- 2 monoclonal antibodies
- Direct measurement of active Renin
- One step solid phase
- Working range: 0-320 pg/ml (MRC calibration WHO 68/356)
- Short incubation time: 3 h at room temperature
- Detection limit: < 1 pg/ml

## Expected values

Normal subjects	Age	N	Mean (pg/ml)	Range (pg/ml)
Supine	20 - 40	24	8.5	3.6 - 20.1
	40 - 60	41	6.3	1.1 - 20.2
	> 60	36	5.6	0.1 - 16.1
Upright	20 - 40	24	14.2	5.1 - 38.7
	40 - 60	41	15.4	1.8 - 59.4
	> 60	36	10.7	0.4 - 33.3

- 92% of values are between 3 and 16 pg/ml in a supine position
- 92% of values are between 3 and 33 pg/ml in an upright position

## ASSAY PROCEDURE



# Angiotensin (REN-CT2)

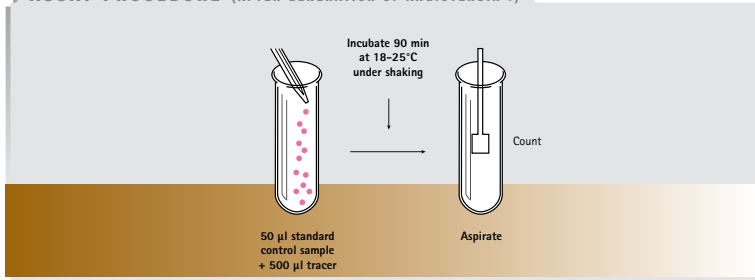
## Performances

- Polyclonal antibody
- Direct measurement of Angiotensin I
- Detection limit: 0.15 ng/ml
- Working range: 0-35 ng/ml (MRC calibration WHO 71/328)

## Expected values

Normal subjects	ng/ml/h
Supine	0.2 - 2.8
Upright	1.5 - 5.7

## ASSAY PROCEDURE (AFTER GENERATION OF ANGIOTENSIN I)



# Aldosterone



# Aldosterone (ALDO-RIACT)

## Clinical interest

- Diagnosis of either primary or secondary hyperaldosteronism in hypertensive patients
- Assessment of the different origins of primary hyperaldosteronism
- Diagnosis of hypoaldosteronism

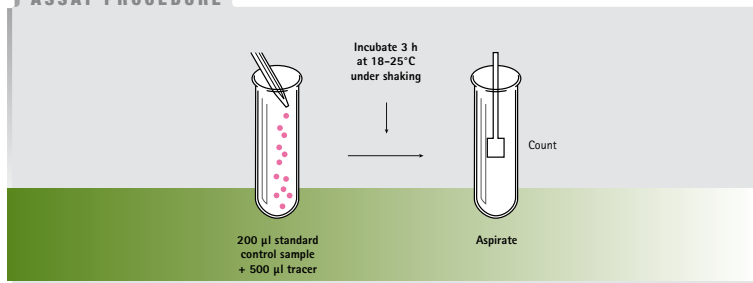
## Performances

- Polyclonal antibodies
- Working range: 0-1500 pg/ml
- Sample: serum, plasma, urine
- Short incubation time: 3 h at room temperature
- Detection limit: 7 pg/ml

## Expected values

	Plasma (pg/ml)		
	5 <sup>th</sup> percentile	Median	95 <sup>th</sup> percentile
Normal subjects			
Supine (n = 25)	42	99	201.5
Upright (n = 41)	97	201	626

## ASSAY PROCEDURE





This is a comprehensive list.  
However these products are not all available in every country.  
Please contact Cisbio Bioassays for further details.

03/2009 - 3M1170 A



#### Cisbio Bioassays

International office  
IBA  
BP 32  
91192 Gif-sur-Yvette / France

International Sales  
Phone: +33 169 857 253  
Fax: +33 169 857 521  
Hotline: +33 466 796 787

France  
Phone: +33 169 857 335  
Fax: +33 169 857 383  
Hotline: +33 466 796 787

[www.iba-worldwide.com](http://www.iba-worldwide.com)  
[www.ria-cis.com](http://www.ria-cis.com)